

## EVA KNIEVA

(1908-2000)

## SAVAS OXOUZOUGLOUS

(1919-1998)

**G**REEK BARITONE Savas Oxouzoglous delighted in portraying the hateful *Friedrich von Telramund* nearly as much as Eva Knieva did, the evil sorceress *Ortrud* in Wagner's **LOHENGRIN**. Throughout a long partnership both on and offstage the pair outdid each other dreaming up new ways to underscore the characters wickedness. During this 1955 Bayreuth production, Oxouzoglous produced a doll of the heroine Elsa and Knieva stuck it full of pins during the 2nd Act duet. Director Wolfgang Gottschott was not amused but let the business remain audiences went wild with horrified delight.

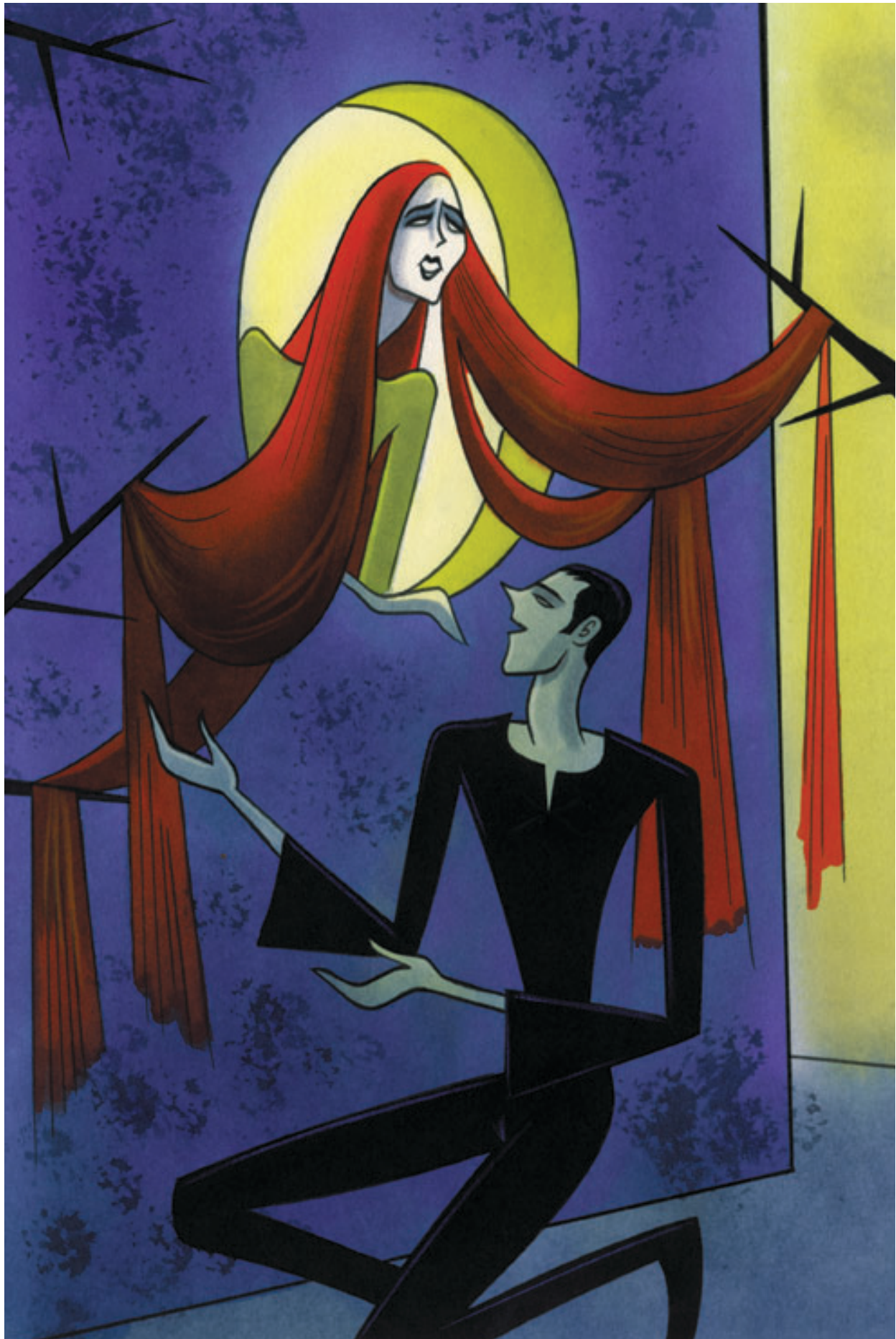


# HETTIE "MIEP" DIESEL-DYKSTRA

(1854-1937)

For Metropolitan audiences in the 1890s, Belgian mezzo-soprano Diesel-Dykstra was the *Ortrud*, the unrepentant baddie in LOHENGRIN. In *Entweihte Götter, helft jetzt meiner Rache* Ortrud call down the wrath of the pre-Christian Teutonic gods upon his enemies, eerily embodying the half-witch, half-woman, all wickedness of Wagner's ideal. The impersonation was so hair-raising, critics tended to ignore the hapless Elsas who paled beside her. Offstage she was notoriously unglamorous and a loud promoter of the Suffrage movement.





## huguette flandrin, zygmunt kazimierski

(PELLÉAS ET MÉLISANDE, BRUSSELS, 1999)

IN ACT III OF DEBUSSY'S ONLY OPERA, Mélisande is seated at the window of a tower singing to herself. Pelléas approaches and, in a scene of peculiar but *rapturous abandon*, he winds himself and a nearby tree in her long hair. Since 1902 directors have had to face the challenge of staging this credibly. Unfortunately, nervous giggles greeted this scene in an otherwise successful production by avant-garde director Robert Wilson.



Z D E N K A P E P S I K O V A

(1959-)

THIS RUSSIAN MEZZO-SOPRANO has been a trailblazer in lesser-known 20th century roles such as *Frau Grösse-Knöckeren* in the recently discovered *SCHMÜTZIGE UNTERKLEIDUNG* by Kurt Weill. This Opera long thought lost, was painstakingly reconstructed from torn up fragments found stuffed in the toes of one of Lotte Lenya's shoes when they came up for auction in 2001.